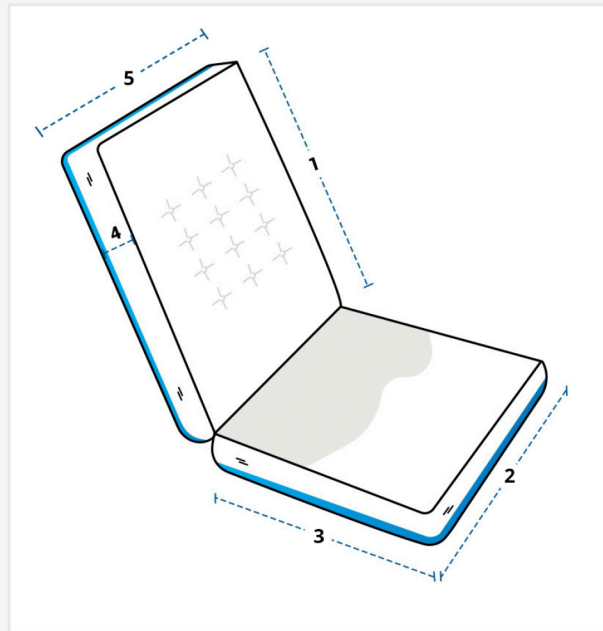


How to Measure Chaise Lounge Tufted Cushion

Measurement Instruction

- ✓ Give exact measurement from edge to edge.
- ✓ The height dimensions will remain same as provided by you.
- ✓ Size may vary from 0 to ±5 cm from the given width/depth for a better fit.



Measurement (cm)

1. Back Height

3. Seat Depth

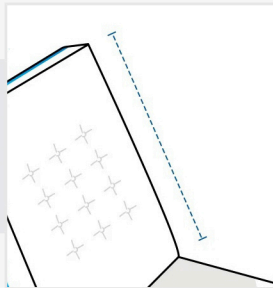
5. Back Width

2. Front Width

4. Thickness

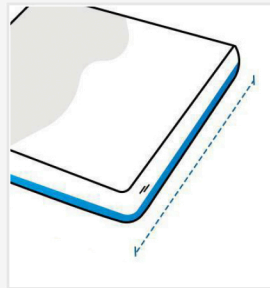
1. Back Height:

Back Height of the Chair Cushion



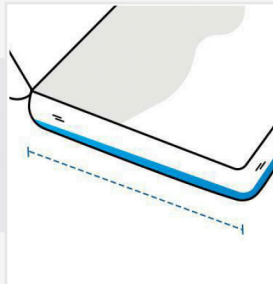
2. Front Width:

Front Width of the Chair Cushion



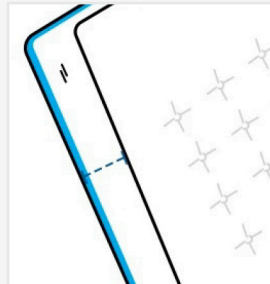
3. Seat Depth:

Seat Depth of the Chair Cushion



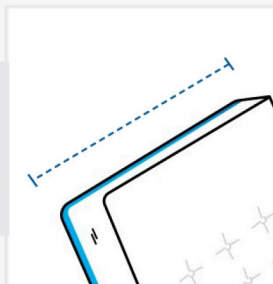
4. Thickness:

Thickness of the Chair Cushion



5. Back Width:

Back Width of the Chair Cushion



We encourage you to upload the image of the article you need the cover for - this helps our team ensure covers are designed keeping your requirements in mind.